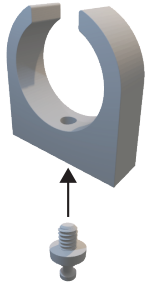
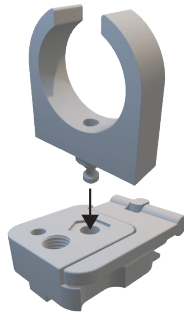


Assembly Instructions

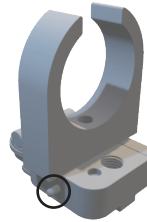
- ① Screw Flex Adapter for Astera Tube into the mount



- ② Insert Flex Adapter for Astera Tube into the "Flex Bridge Muffin"



- ③ Verify the locking mechanism



Thank you for choosing this product.
This manual provides all essential steps for setup and handling. We recommend keeping it for future reference.

Contents:

- 8x Flex Adapter for Astera Tube

General Information:

- The mount is intended solely for the installation of appropriate objects and devices.
- The warranty/guarantee is void for any damage caused by disregarding this manual.
- No liability is assumed for consequential damages.
- Required personnel: 1 physically and technically qualified person.

Product Features:

- Compatible with the "Flex Bridge Muffin"
- 1/4" – 20 UNC thread
- Maximum load capacity: 7.5 kg*
- Variable mounting for "Astera Tube Clamp" and "Astera PB 15 Brickmount"
- Pack dimensions (LxWxH): 13x13x24 mm

Inspection, Maintenance, and Cleaning:

- Regularly check the mount for deformation, corrosion, or loosening.
- If any damage is detected, discontinue use of the mount.
- Unauthorized modifications or alterations to the mount are prohibited and will void the warranty.
- Perform maintenance only when the mount is unloaded.
- Warning! Risk of pinching or bumping.
- For cleaning, use a slightly damp cloth and a mild cleaning agent.

Flex Adapter for Astera Tube

FLEXline

Operating Instructions

1. Before Use

- Perform a visual inspection before and after use to ensure that all components are present and in proper condition.
- Check load-bearing components and auxiliary equipment for suitability.
- Ensure that the supporting structure is free of lubricants or residues.

2. Mounting the Holder

- Follow the schematic layout in the setup instructions.
- Screw the thread into the load to be mounted.
- Insert the bolt into the "Flex Bridge Muffin" holder.
- Push the bolt in fully until it reaches the stop.
- Verify complete locking (red marking should not be visible).
- Exceeding the maximum load capacity may lead to instability or loosening.
- Recheck the locking mechanism and adjust if necessary.

3. During Operation

- Do not move loaded mounts, as this could lead to a fall hazard for the mounted equipment.
- Avoid contact between people or objects and the mounted holders, as this may compromise stability.
- Do not expose holders to wind, as strong airflow or wind could loosen the connection and cause the equipment to fall.

4. Dismantling

- Secure and unload the attached object.
- Release the locking mechanism.
- The object can now be removed or detached.

Technical Data / Specifications

Material	stainless steel
Load Capacity	max. 7,5 kg*
Dimensions (LxWxH in mm)	13 x 13 x 24

* The specified load capacity applies under centralized loading on a flat surface and in the absence of environmental influences (e.g., wind, impact).