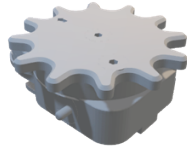


Assembly Instructions

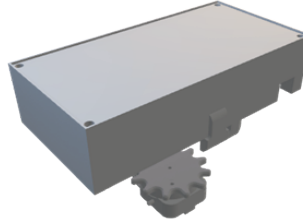
- ① Attach the holder to the "Astera HydraPanel."



- ② Attach the holder to the "Flex Bridge Muffin".



- ③ Join both holders together.



- ④ Alignment possible in 30° increments.

Thank you for choosing this product.
This manual provides all the essential steps for assembly and handling. We recommend keeping it for future reference.

General Information

- The holder is intended solely for the mounting of appropriate objects and devices.
- The warranty/guarantee is void for any damage caused by disregarding this manual.
- No liability is assumed for consequential damages.
- Required personnel: 1 physically and technically qualified person.

Product Features

- Compatibility: Suitable for mounting the "Astera HydraPanel"
- Required Accessory: "Flex Bridge Muffin"
- Maximum Load Capacity: 1 kg*
- Package Dimensions (LxWxH): 120 x 90 x 35 mm

Inspection, Maintenance, and Cleaning

- The holder must be regularly inspected for deformation, corrosion, or loosening.
- If damaged, the holder must no longer be used.
- Unauthorized modifications or alterations to the holder are prohibited and will void the warranty.
- Perform maintenance only when the holder is unloaded.
- Caution! Risk of pinching or bumping.
- For cleaning, use a slightly damp cloth and a mild cleaning agent.

Flex Gear Adapter for Hydra Panel

FLEXline

Operating Instructions

1. Pre-Operation Check

- Perform a visual inspection before and after use to ensure all components are present and in proper condition.
- Verify the suitability of load-bearing components and auxiliary equipment.
- Ensure the supporting structure is free of lubricants or residues.

2. Mounting the Holder

- Follow the schematic layout in the assembly instructions.
- Secure the holder onto the "Astera HydraPanel."
- Attach the magnetic holder to the "Flex Bridge Muffin."
- Position the lamp as desired.
- Verify complete locking (the red marking should not be visible).
- Exceeding the maximum load capacity may lead to instability or detachment.
- Recheck the locking mechanism and adjust if necessary.

3. During Operation

- Do not move a mounted, loaded holder, as this could cause it to loosen.
- The holder is intended for indoor use only. Avoid any contact between people or objects and the holder, as this could cause it to detach.
- Do not expose the holder to wind, as strong airflow could cause detachment.

4. Dismantling

- Secure and relieve the attached object of its load.
- Release the locking mechanism.
- The object can now be safely removed or detached.

Technical Data / Specifications

Material	Aluminium
Load Capacity	max. 1 kg*
Dimensions (LxWxH in mm)	120 x 90 x 35

* The specified load capacity applies under centralized loading on a flat surface and in the absence of environmental influences (e.g., wind, impact).